

Humanitarian 10" and 13" Baby Doll



Through wise shopping and watching for sales the cost for the materials for this bear are approximately \$1.00 per doll.

Suggested Materials

Flesh Fabric. 1/3 yard of 45" wide fabric will make 3 10" dolls, 3/4 yard of 45" will make 4 dolls that are 13" tall. Remember to consider the rich variety of skin tones that might better suit the countries for the destinations of the dolls

Clothing. Use quality fleece for longevity. The edges of fleece do not need to be finished. Fleece often comes in widths of 65". Ten sets of clothing can be completed with 8" of 65" wide fleece. 1/3 yard will make 8 sets.

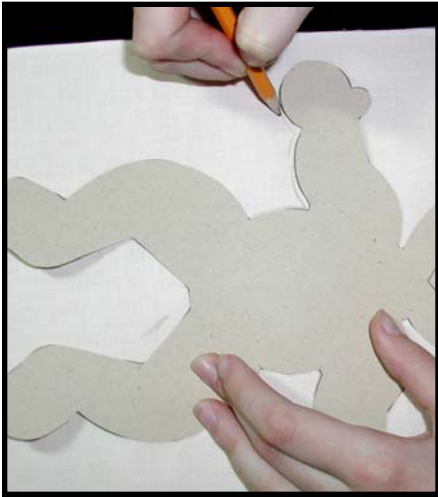
Ribbon. Four inches of 1/4" wide ribbon is a good scale for the jacket tie, however other widths and embellishments can work great. Remember, no buttons can be used for safety reasons.

Stuffing. Amounts may vary depending on the how tight the doll is stuffed and the quality of stuffing.

Embroider Floss. Consider colors for the eyes, nose and mouth that will have good contrast to the chosen skin tones. Fabric paints may also be used.

Colored Pencil or Crayon. These are used for coloring the cheeks. Make-up blushes are not suggested because they will not last.

Yarn. If preferring to give the doll hair, yarn will work well. Choose a yarn that will hold it's twist. Secure the hair style well. This doll is in the proportions of a baby, so shorter styles will look better.



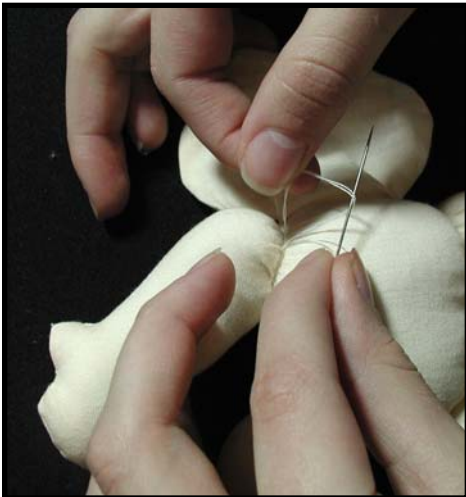
1 Copy the doll pattern onto cardstock and cut it out on the solid line. Place the pattern onto two layers of skin colored fabric that are right sides together and mark the outline of the doll. Use a light pencil, so markings will not show through once the seam is sewn. The cardstock will allow many dolls to be marked quickly. Leave space between the dolls for seam allowances. The jacket and pants are marked in the same way.



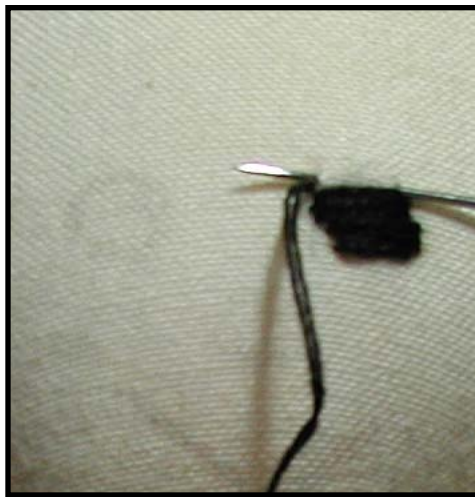
2 First, machine sew on the marked outline of the doll. Use smaller stitches and/or heavier thread to assure that the doll will hold together well. The top of the head is open for turning the doll right side out. After it is sewn, cut 1/4" outside the stitched line. This will become the seam allowance. By sewing on the marked line, greater accuracy can be achieved.



3 Turn the doll right side out through the top of the head. Press the seams so the shape of the doll is well defined. Stuff the legs. Stuff the doll tight as the shapes will be better defined and there will be fewer wrinkles. With a needle and thicker thread, wrap the leg joints. Knot the thread and secure it well.



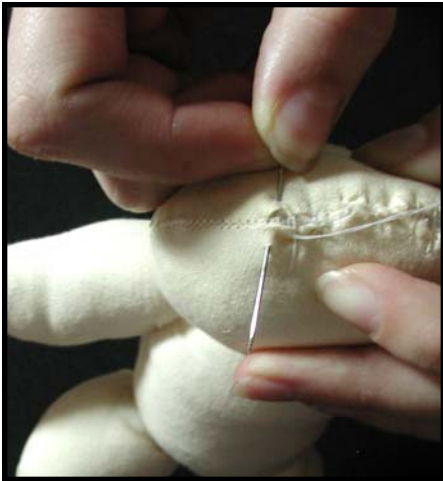
4 Stuff the arms and body. Wrap the shoulders. If the wrap is close to the neck, the top of the shoulder will be better defined. Stuff the head but don't wrap the neck. The technique of wrapping the joints is a great way to give the doll more movement and shape.



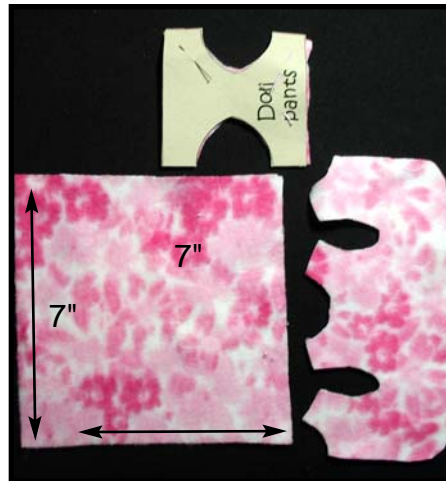
5 Mark the face and *Satin Stitch* the eyes and nose with appropriate colors. Stitch the eye lashes and the mouth. The knotted end of the thread can go through the opening of the head. It is a little easier to lay the threads flat while doing the embroidery if the head has been stuffed before hand.



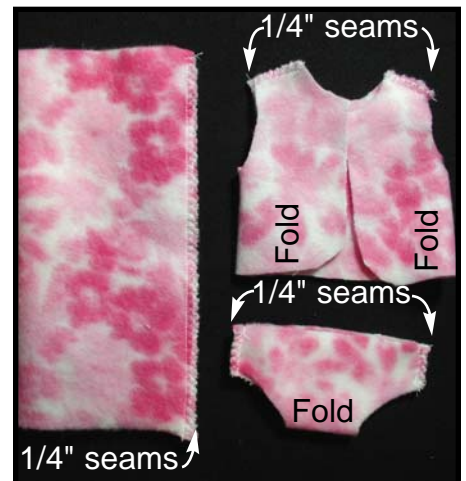
6 Use thread colors that will contrast the skin color of the doll. Make a small white *French Knot* to add sparkle to the eyes. Blush the cheeks with colored pencil or crayon. Remember, though buttons would make easy eyes, they are not allowed on humanitarian dolls for safety reasons.



7 With needle and thread close the top of the head. If hair is preferred, loop and hand tack yarn or hand secure braids. This will also cover the head opening.



8 Cut the clothing out of quality fleece. Cut a 7" square for making the hat.



9 Fold on the fold lines of the jacket and pants. Machine sew the shoulder seams of the jacket and the sides of the pants using 1/4" seams, backstitching to secure the ends. Zig zag these seams as well. The clothing is ready to be turned right side out. The 7" (8" for 13" doll) square is folded in half and sewn down one side. Turn it right side out.



10 To complete the hat, fold the two raw edges together, so the seam from step 9 is inside. Hand gather the raw edges. Use a large running stitch. Pull the gathers tight and hand sew the top of the hat closed. Secure the opening well.



11 With the top of the hat closed, fold the lower edge up about 1/2" and hand tack.



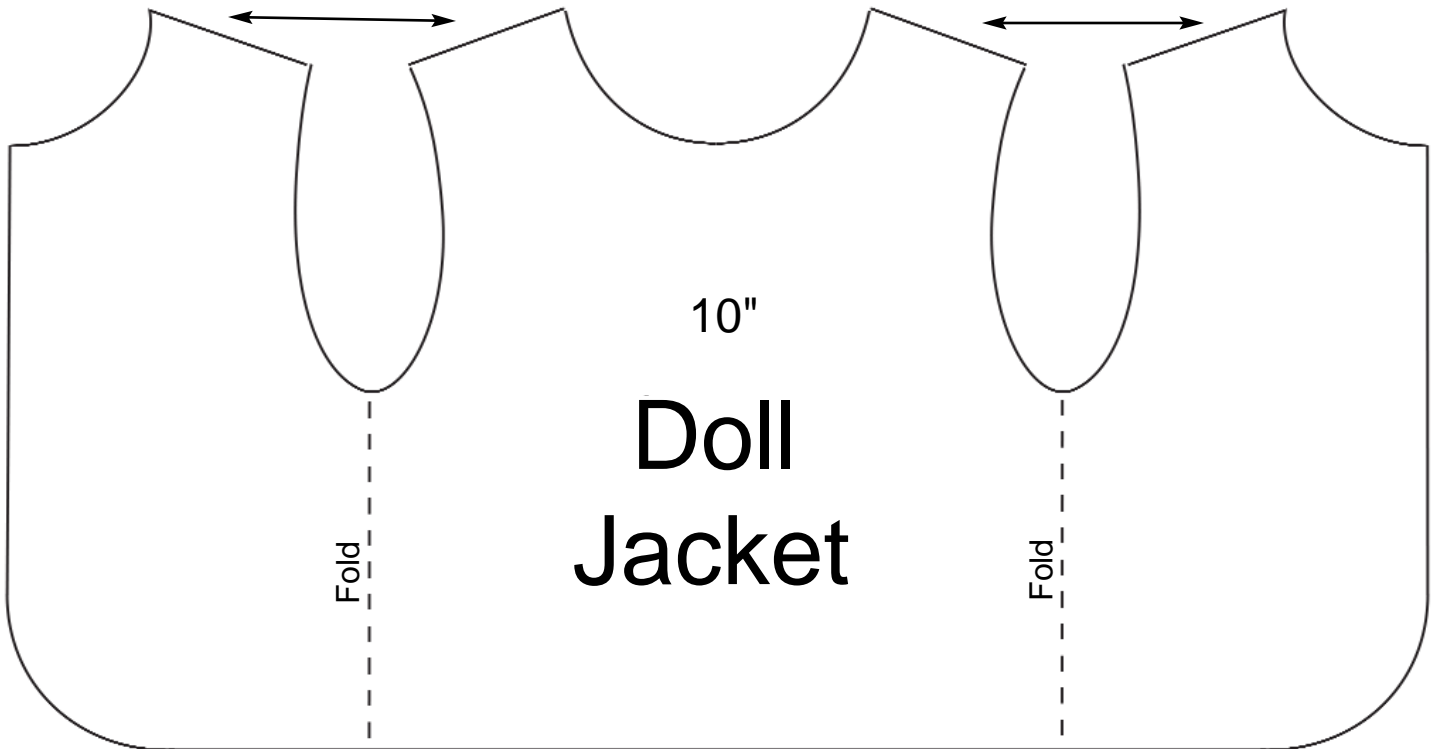
12 Hand tack the clothing onto the doll. Add a small ribbon bow to the jacket. The edges of the clothing can be left plain, as fleece will not unravel, however, decorative machine stitches on the edges can add charm.

Open

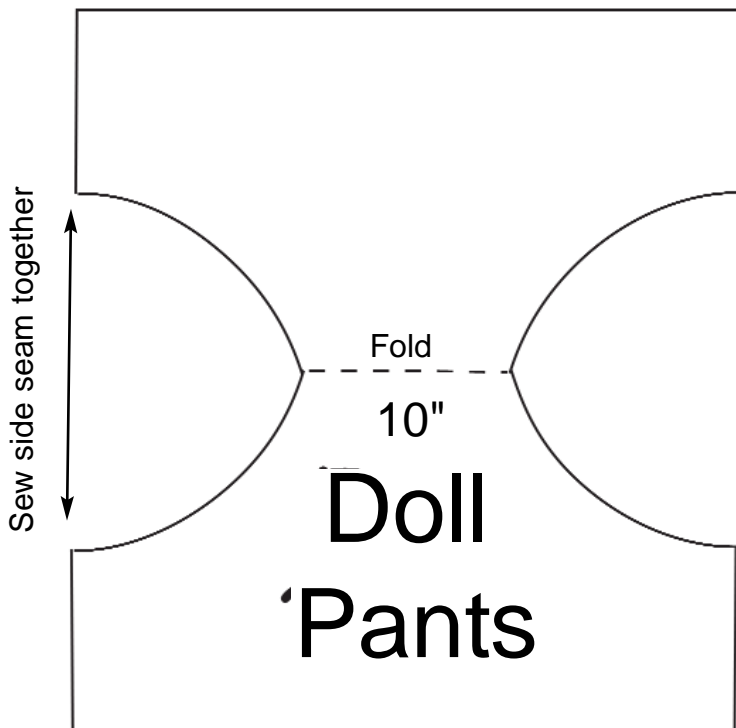
Humanitarian 10" Baby Doll

Seam allowances are not included. It is better to mark the exact doll outline and sew right on that line. Then cut the 1/4" seam allowance. This will help achieve a more accurate shape. A shorter stitch length setting will allow better negotiation of the line as the feed-dogs will not progress the fabric forward as fast.

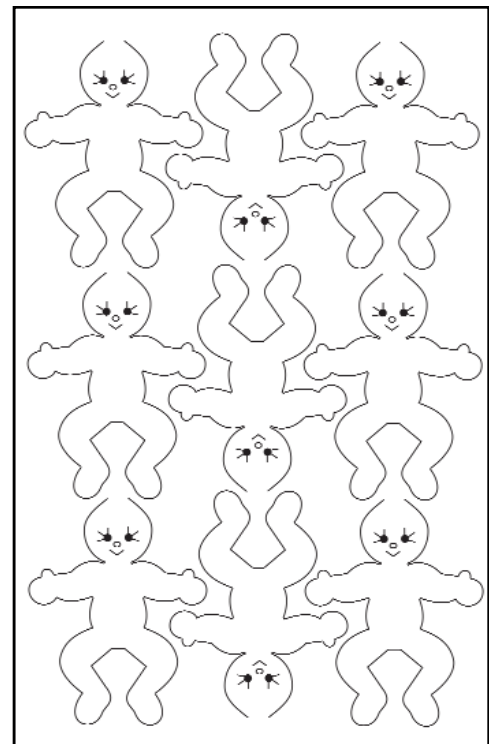
Place shoulder seams together and sew using 1/4" seam.



1/4" seam allowances are included for the shoulder seams and pant side seams, however it is assumed that fleece is used and no allowance for facing the edges are included or needed.



If the pants are too large, adjust the size by taking a deeper seam on the sides.

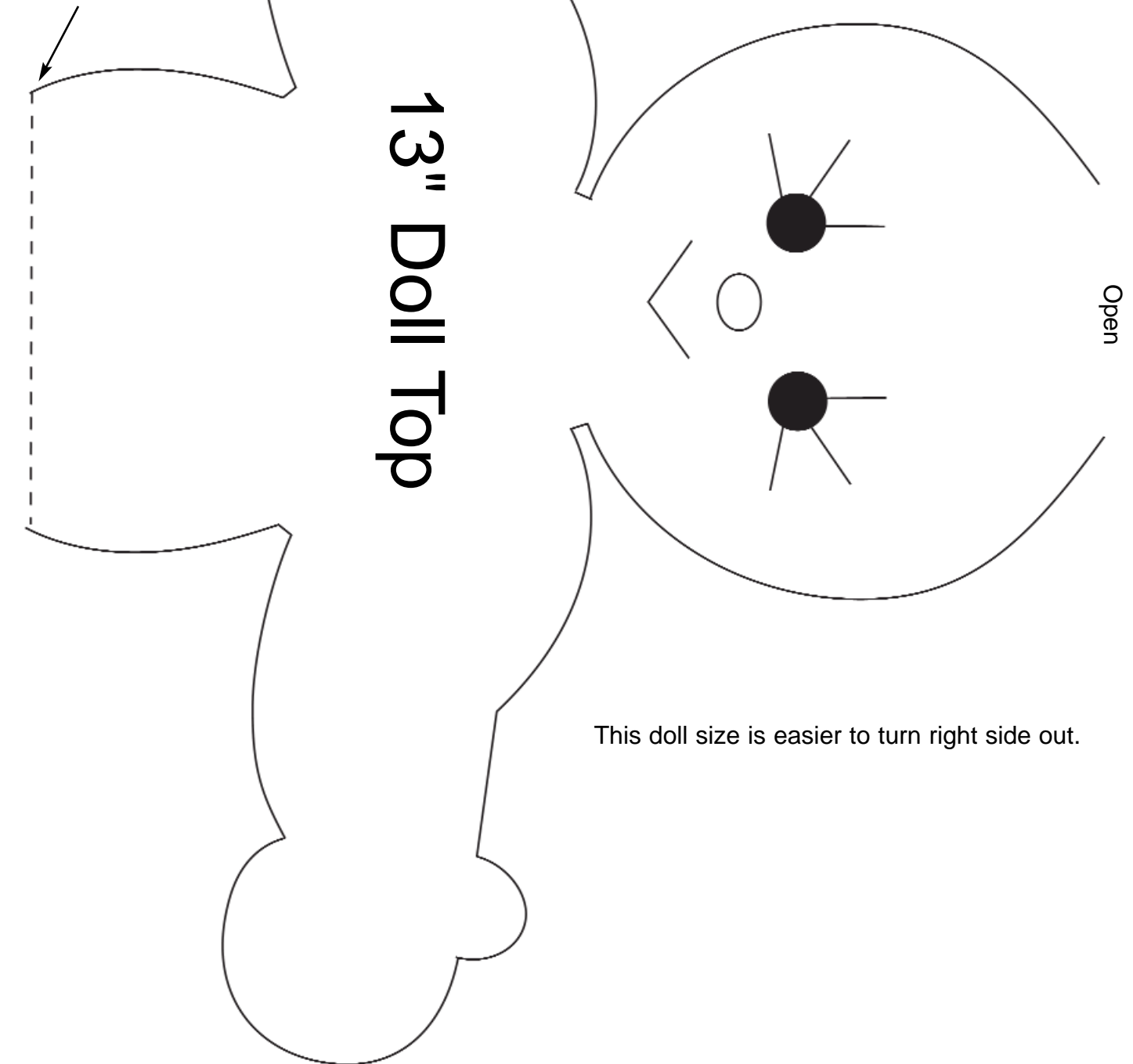


How to fit nine dolls onto 1 yard of fabric. Remember, two layers of fabric are folded right sides together. Leave enough space between the dolls to allow for 1/4" seam allowance on each.

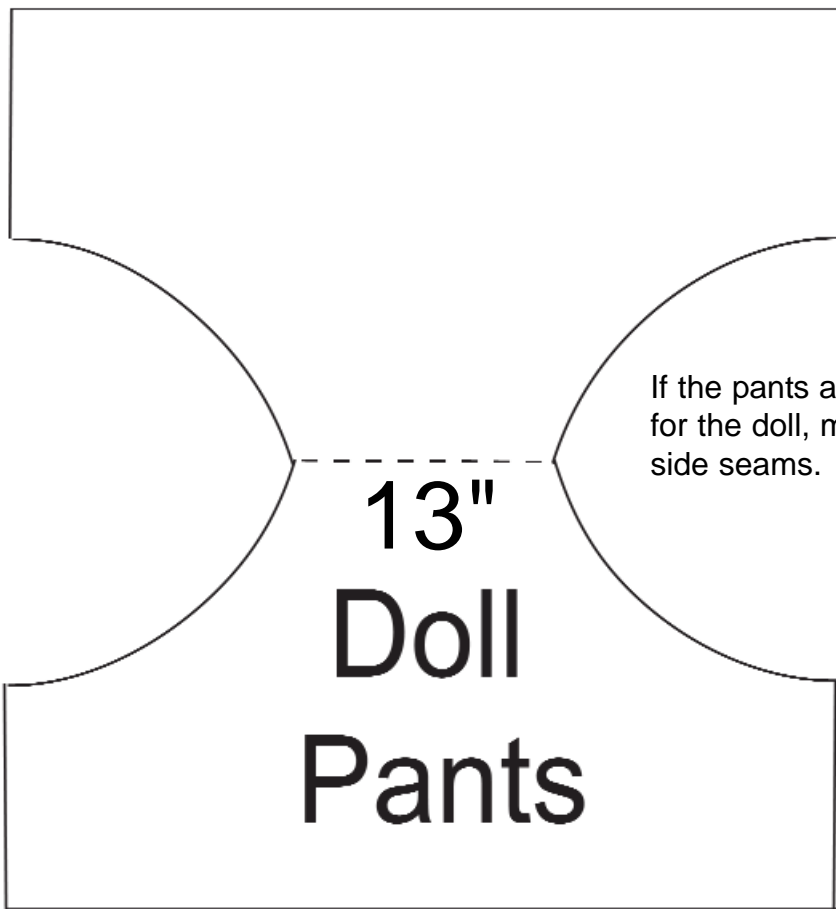
13" Doll Top

Photocopy onto cardstock
Cut out the doll top and bottom
Tape the doll together at the dashed line
Cut the doll out as one piece

Match this dashed line to the dashed line of the lower part of the 13" doll



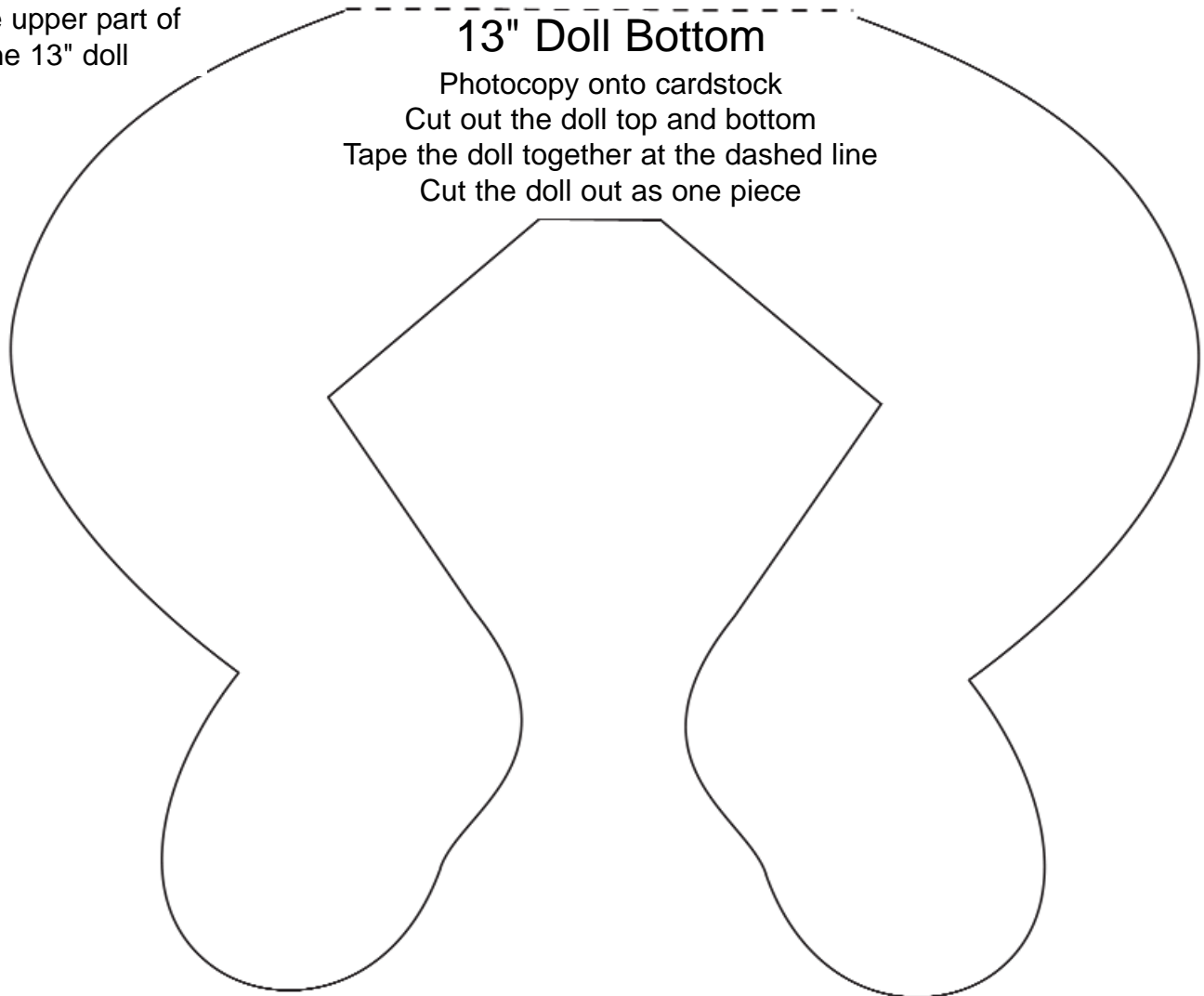
This doll size is easier to turn right side out.



If the pants are too large for the doll, make deeper side seams.

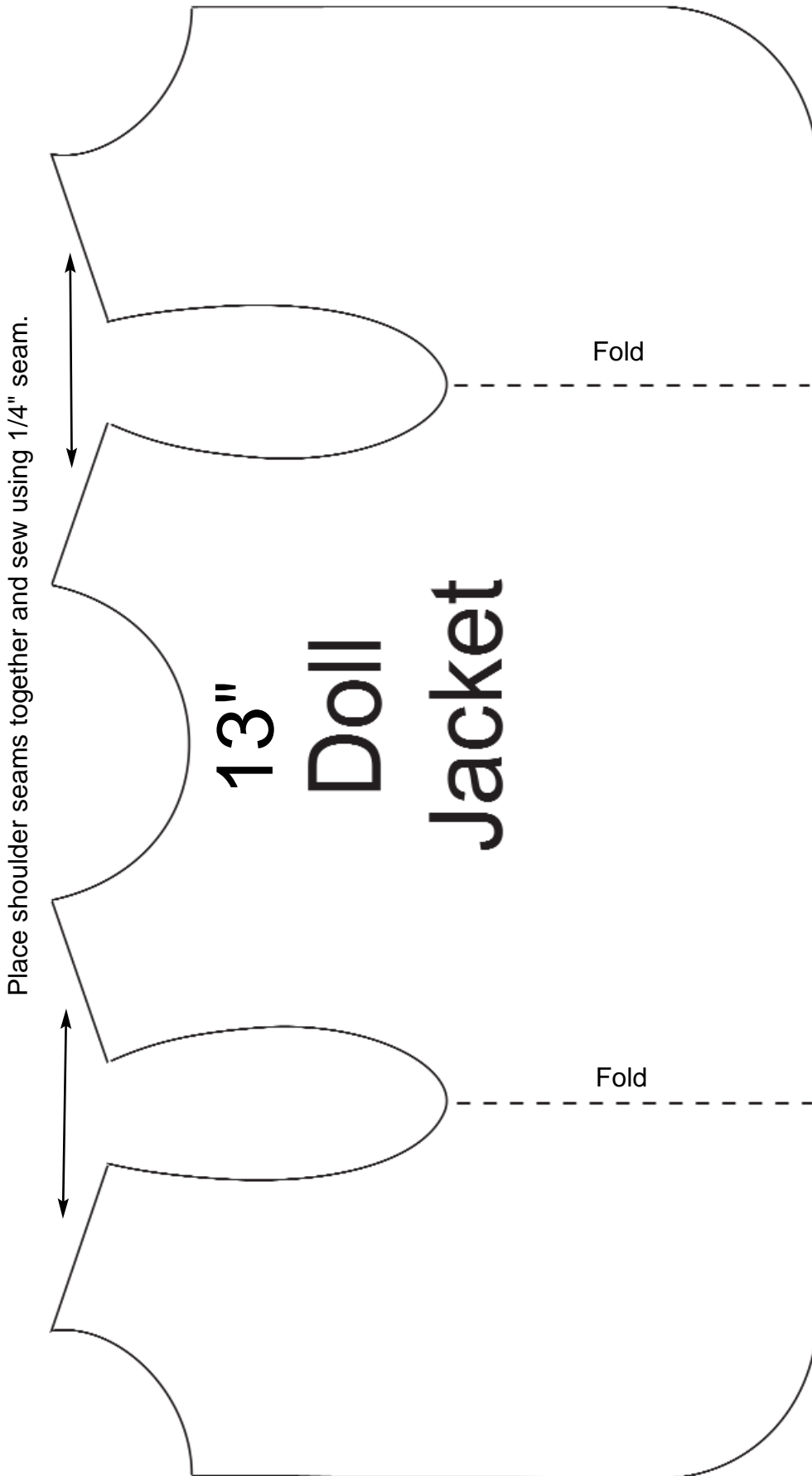
13" Doll Pants

Tape this dashed line to the upper part of the 13" doll



13" Doll Bottom
Photocopy onto cardstock
Cut out the doll top and bottom
Tape the doll together at the dashed line
Cut the doll out as one piece

An easy way to turn the doll right side out.



Begin by turning a foot in on itself using a dowel.



Push the foot all the way through the doll and part way out the top of the head.



Repeat this for the other foot.



Turn the hands the same way but push them just into the head. With this preparation, pull the feet all the way out of hole in top of the head. The hands will be turned enough that they can be worked out the rest of the way without a problem.