

Bunny and Bear Puppet

Beginner seamstress



Through wise shopping and watching for sales the cost for the materials for this bear are approximately \$1.50 per puppet, \$2.00 each if the lining is fleece. Use quality fabrics.

Suggested Materials

Fleece. 1/3 yard of 66" wide fleece will make three bears. 1/2 yard make three bunnies. Contrasting fleece works well for the ear color and the lining.

Stuffing. Amounts may vary depending on how tight the bear is stuffed and the quality of stuffing.

Pom Poms. Each bear or bunny needs a 1" pom pom for the tail and a 1/2" pom pom for the nose.

Felt. Small amounts of black for the eyes. The ear color may also be made of felt, but fleece works as well.

Lining. 1/3 yard of 45" wide fabric will line three bears or bunnies. Cotton woven or fleece works well here. 66" wide fleece will make four lining sets.

Matching Thread. Match the thread to the ear color and muzzle when whip stitching them to the puppets.



1 Copy the puppet pattern onto cardstock and cut it out on the solid line. Place the pattern onto two layers of fleece that are right sides together and mark the outline of the bear. The cardstock will allow many bears to be marked quickly. Sew right on the marked line, leaving the straight lower edge unsewn and cut the bear out adding 1/4" seam allowance. Clip a little closer into the "V" of the neck without compromising the stitches.



2 Turn the bear right side out. Lightly stuff the edges of the ears. Top stitch the inside of the ear and the area where the ear meets the head. The location of this stitching is shown on the pattern. This stitching shapes the bear head and needs to follow the lines on the pattern as closely as possible.



3 Make the bear paws the same way as the puppet by tracing the pattern onto two layers of fleece. Sew on the solid line. Cut the paw out adding 1/4" seam allowance. Turn right side out and stuff lightly, keeping the away from the opening. Place the open straight edges of the paws along one side of the of the lower edge of the puppet. Machine baste to secure the feet to the lower edge of the puppet.



4 Stuff the head and arms enough to shape the puppet, while leaving room for fingers that will operate the puppet later. Place the muzzle. Hand whip stitch using matching thread. Before whip stitching all the way around, add stuffing to shape the muzzle. The ear color should lay inside the top-stitching and is also whip stitched into place.



5 Sew a 1/2" pom pom to the top of the muzzle for the bear nose. Cut the eyes from black felt and whip stitch them to the bear face, using black thread. To make eye lids, cut half circle of fleece and whip stitch the rounded edge to the face so the straight edge covers about 1/3" of the felt eyes. With double matching thread take a few stitches for the mouth and pull it tight into the muzzle. Anchor this thread above the nose and knot the thread to hold the mouth shape. Make two French Knots with white embroidery floss for the shine of the eyes.



6 Anchor this thread above the nose and knot the thread to hold the mouth shape. Make two French Knots with white embroidery floss for the shine of the eyes.



7 Trace the lining on two layers of fabric that are right sides together. Sew on the solid line. Cut the lining out adding 1/4" seam allowance. The dashed line on the side of the lining is left unsewn.



8 Place the puppet inside the lining. Because the puppet was turned right side out and the lining was not, right sides should be together. Match the side seams. Machine sew around the bottom of the puppet, using a 1/2" seam allowance. This will help assure that the edges of the feet are caught in this seam.



9 Pull the puppet through the opening in the side of the lining.



10 Pull the lining all the way out to expose the opening its side.



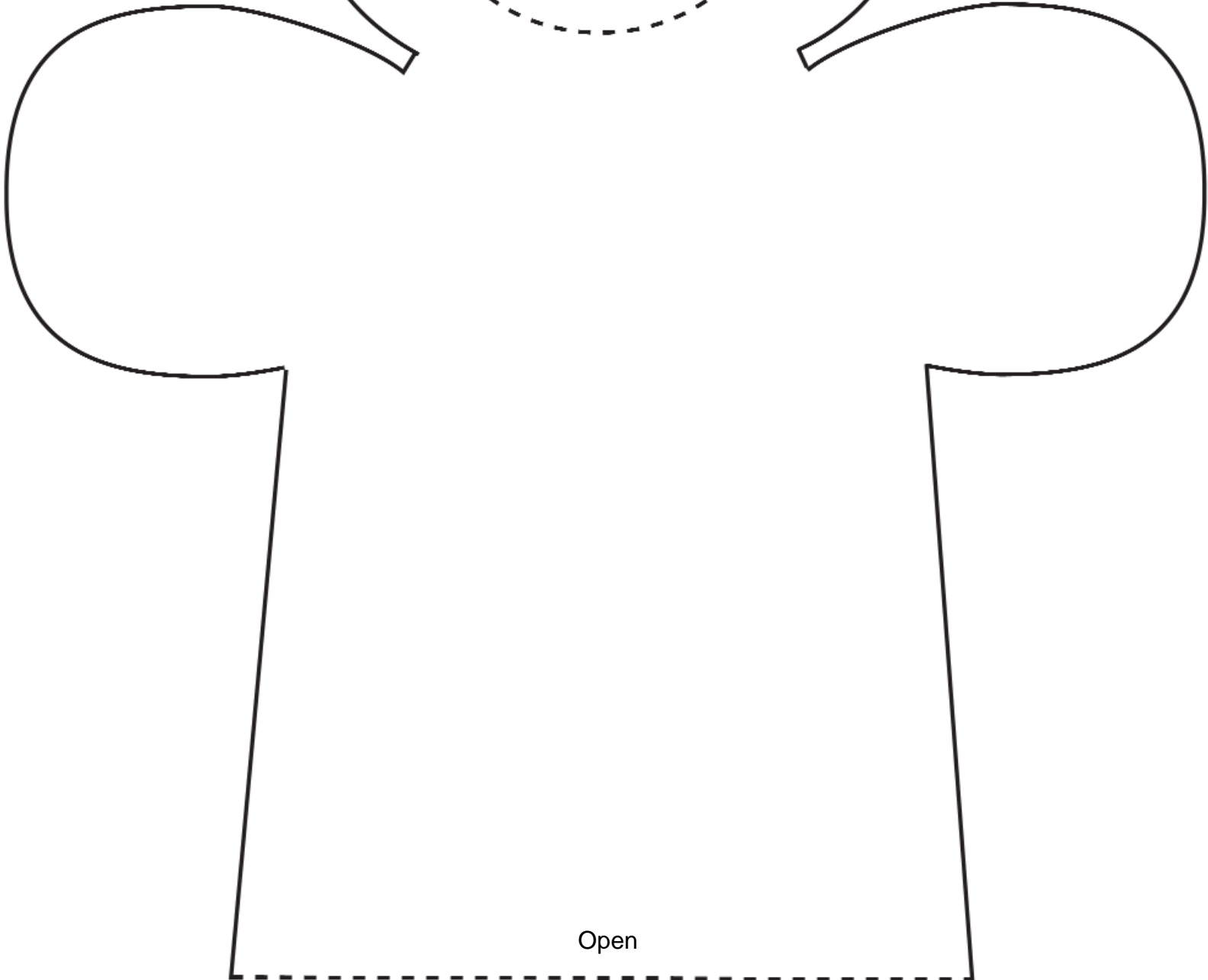
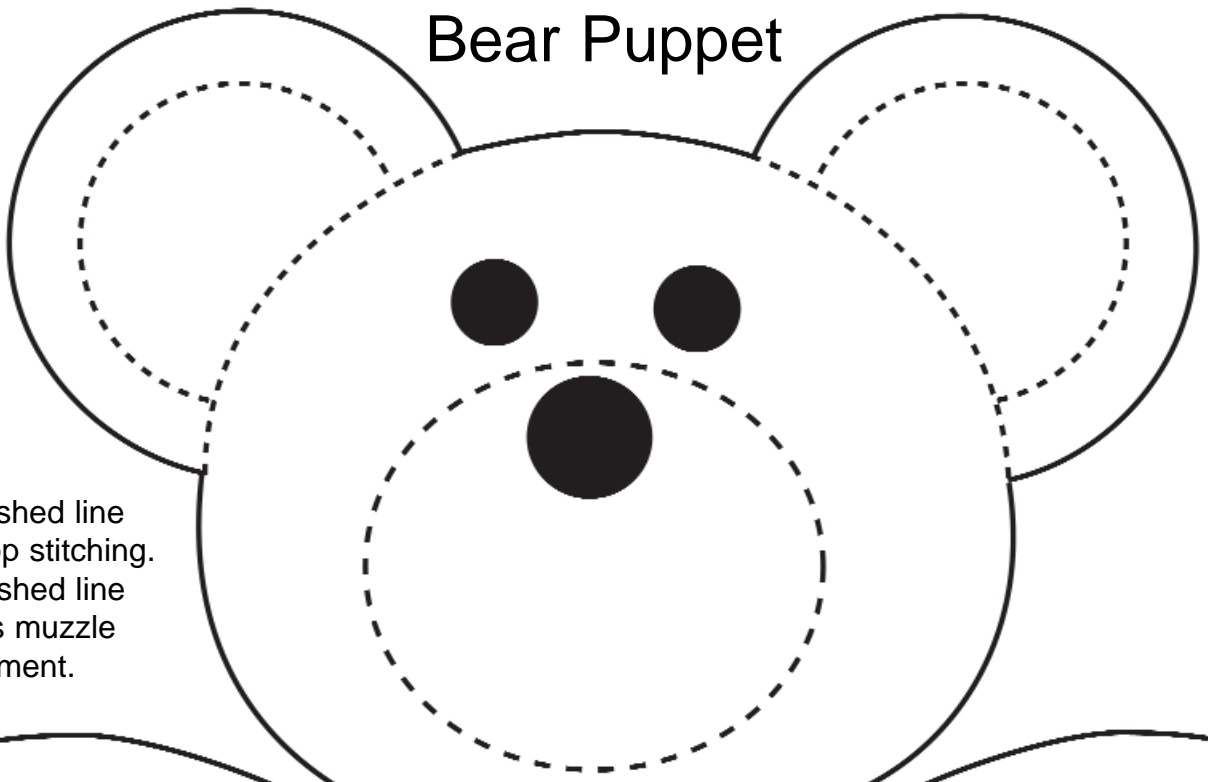
11 Machine sew the opening in the lining closed.



12 Work the lining up inside the puppet until the lining arms and head are pushed up into the puppet arms and head. Work with the lining until it lays nicely inside and fingers can find their comfortable position to work the puppet properly.

Bear Puppet

Small dashed line
indicates top stitching.
Large dashed line
indicates muzzle
placement.

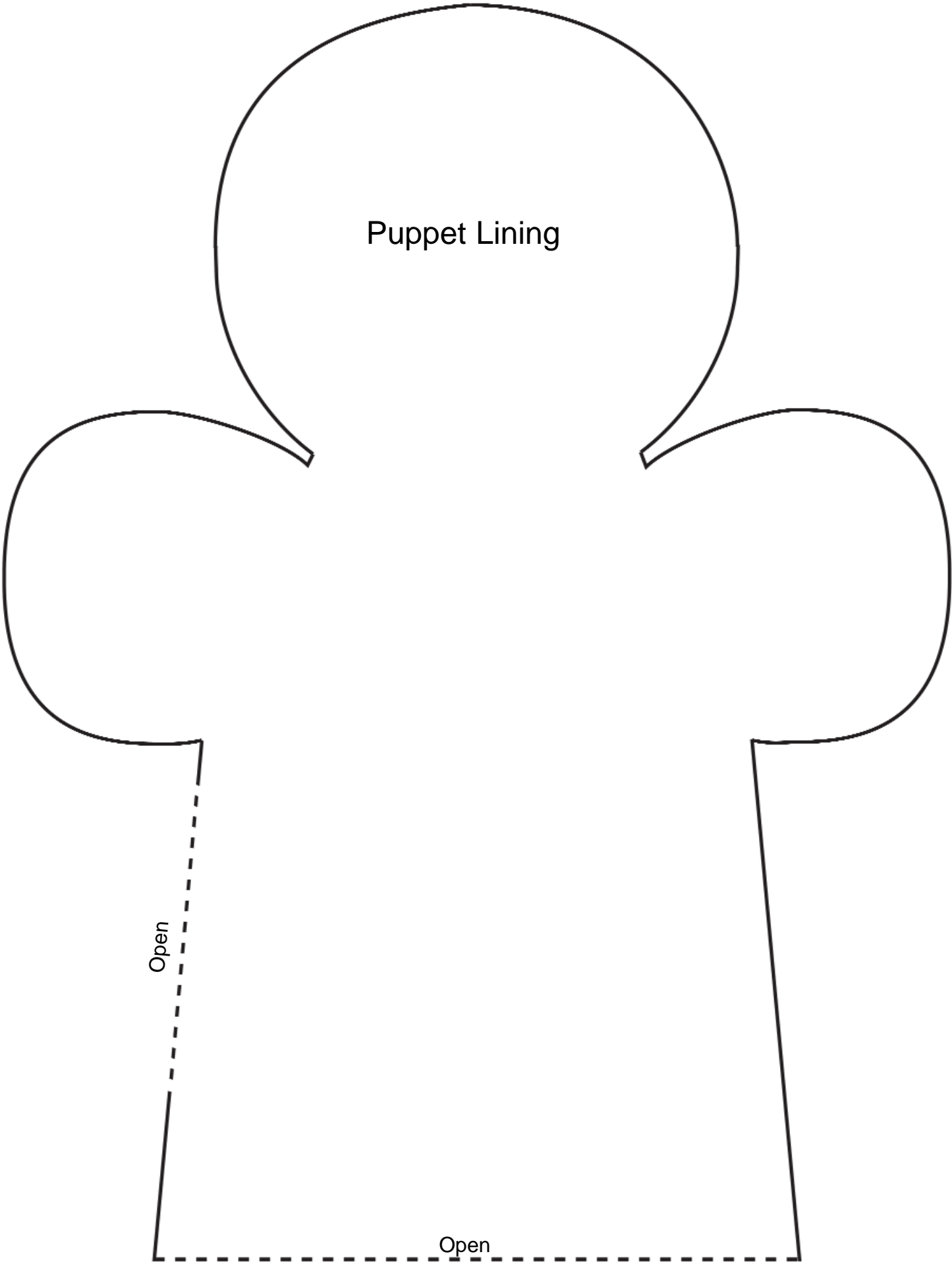


Open

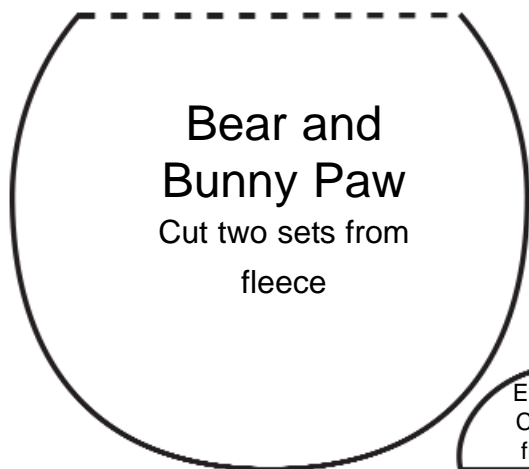
Puppet Lining

Open

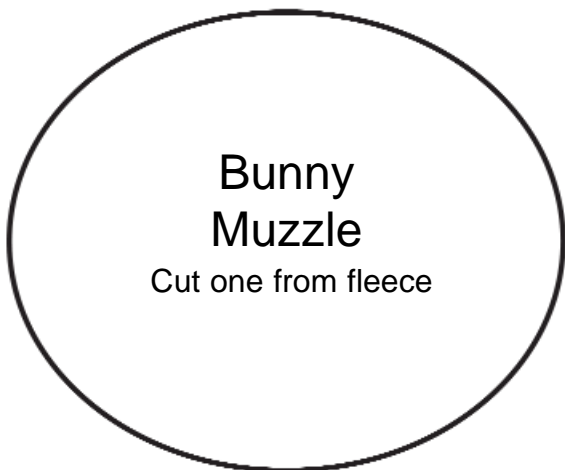
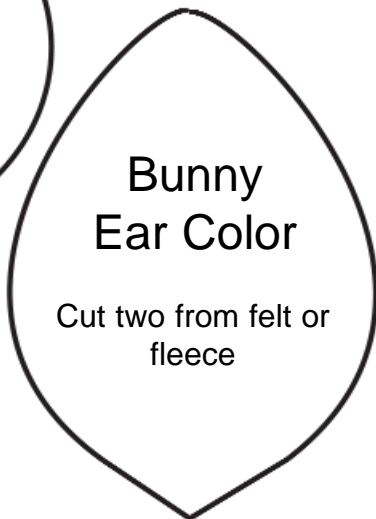
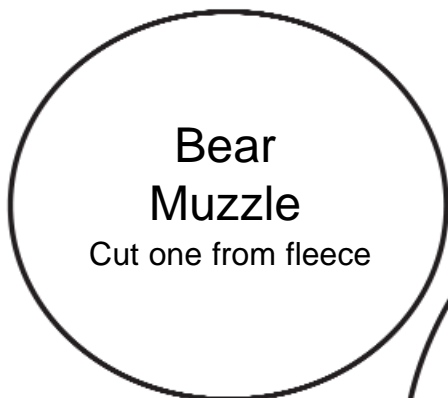
Open



Parts for Bunny and Bear



Trace onto two layers of fleece. Sew on the solid line. Cut the paw out adding 1/4" seam allowance. Turn right side out and stuff lightly, keeping the stuffing away from the opening so the bulk will not be a problem when sewing the feet into the seam.



Cut the ears off of the bear puppet pattern and tape the bunny top on the dashed line. Make this puppet the same way the bear is made.



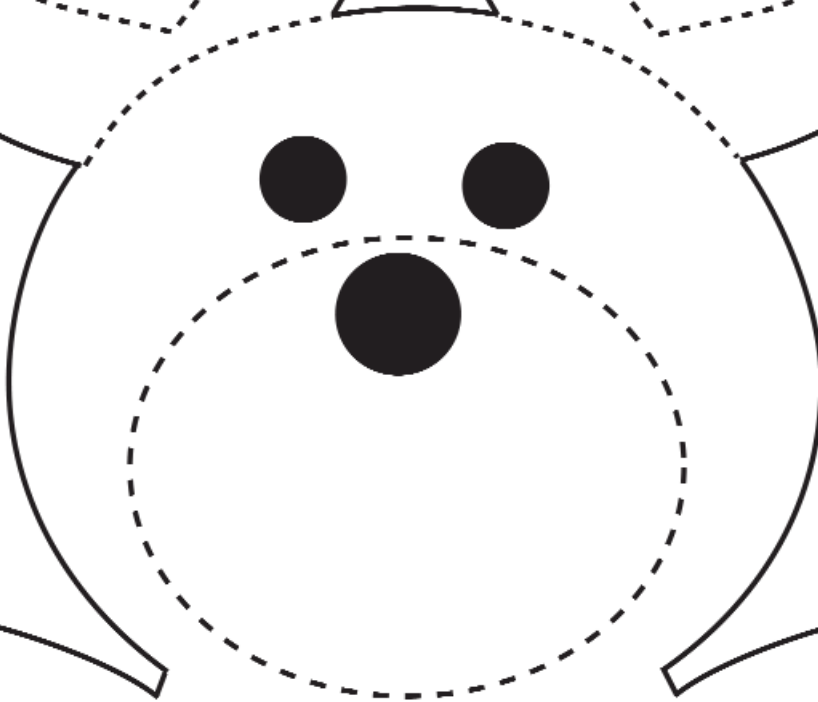
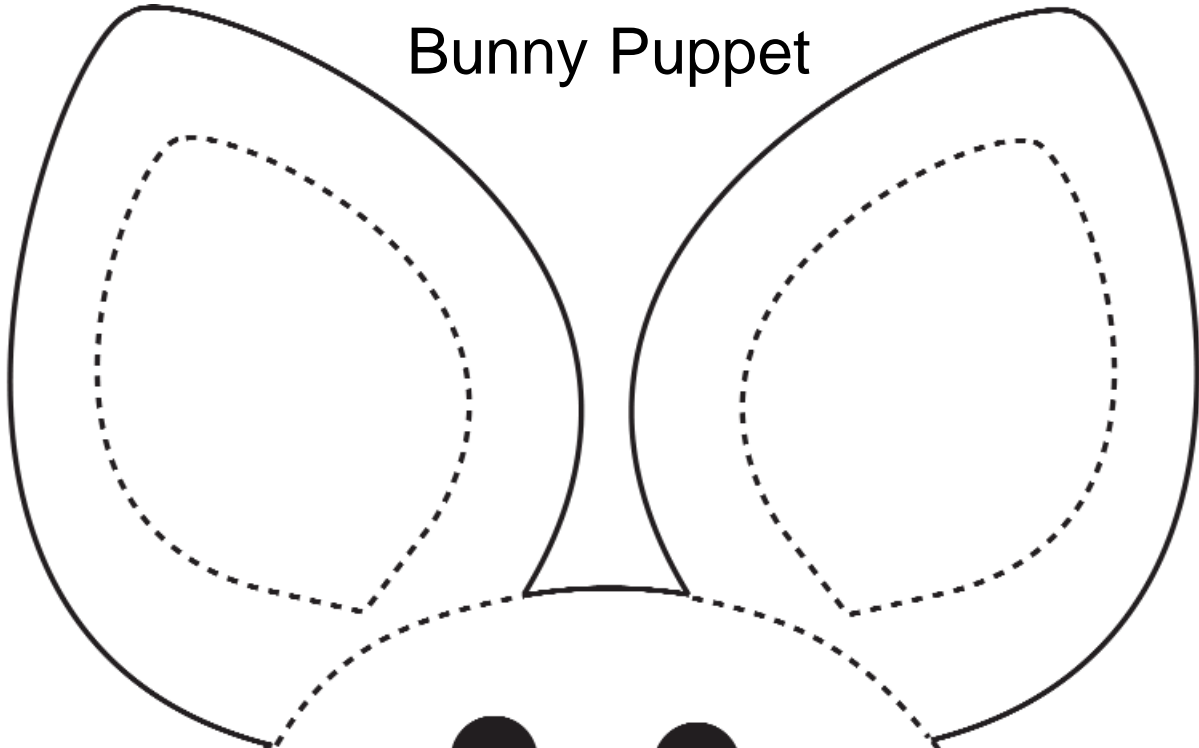
After lightly stuffing the ears, top-stitch the ears and the shape of the head next to the ears. Whip stitch the ear color and muzzle. Add stuffing to the muzzle. Stuff the head and arms.



The face is made the same as the bear. Follow the directions set forth in the bear puppet to finish the bunny face and lining. A 1" pom pom makes a great tail and it sewn through the lining to hold it in place.



Bunny Puppet



Small dashed line indicates top stitching.
Large dashed line indicates muzzle placement.



Cut the ears off of the bear puppet and attach the bunny top to it, aligning the head and arms.