

Infant Gown

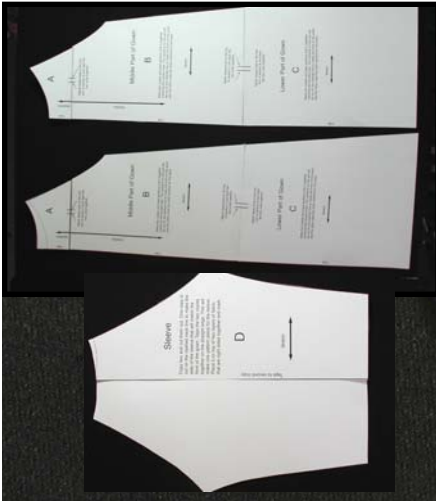
Beginner seamstress



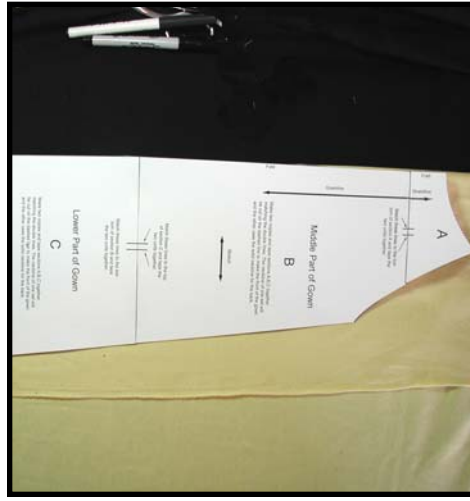
Materials

Fabric Lightweight 100 percent cotton knit or cotton stretch terry. NO OTHER FABRIC will work. 1 1/3 yard of 62" wide cotton knit will make two gowns and a partial gown.

Ribbing. 5" x 22" wide will make one gown with the ribbed hem. 2 1/2" x 22" will make the hemmed gown without the ribbing.



1 Copy the pattern twice onto cardstock and cut it out on the solid line. Tape A,B,C together matching the double lines on the ends. Use one set for cutting the back neckline and the other set for cutting the front neckline. Tape the two sleeve copies together at the line indicated and cut one side on the dashed line for the side of the sleeve that will match the front of the gown.



2 Place the pattern on top of two pieces of fabric that are right sides together. The gown front and back are placed on the fold. Mark them on the fabric and cut them out on the line. Seam allowances are included in the pattern.



3 Sew the two sleeves with the front neckline to the front of the gown. Sew the two sleeves with the back neckline to the back of the gown. Serge or zig-zag to finish the seam allowances.



4 To make the ribbing, cut 10" x 2 1/2" of ribbing fabric. Sew the ends together using a 1/4" seam allowance. Fold it in half lengthwise, wrong sides together.

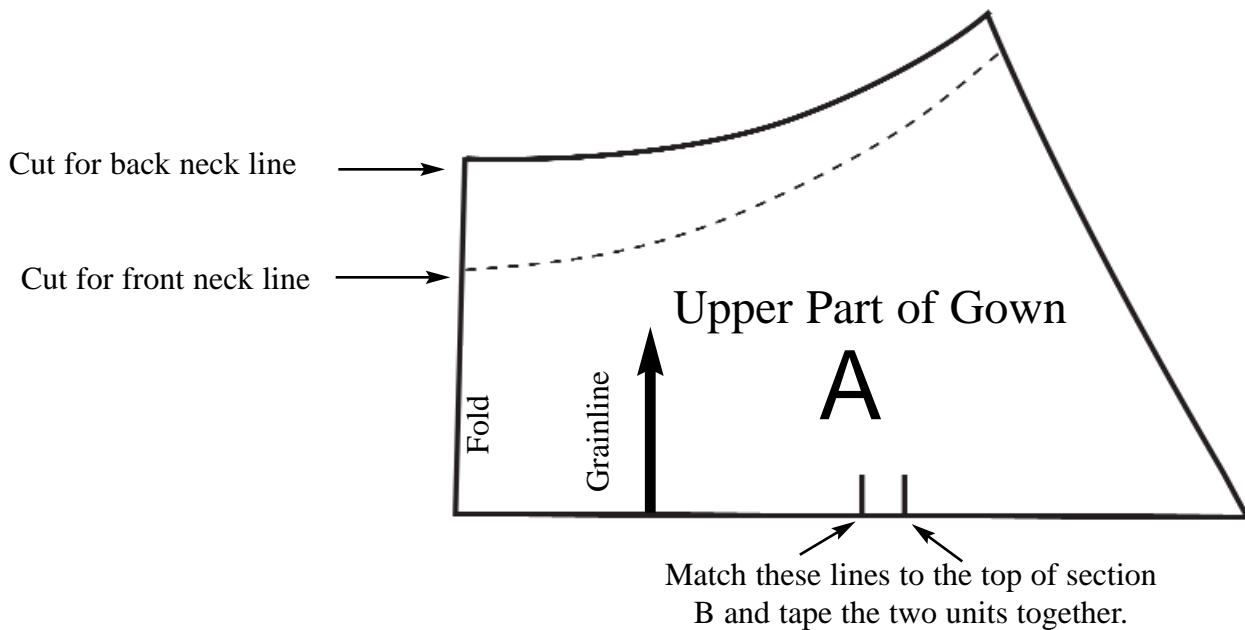
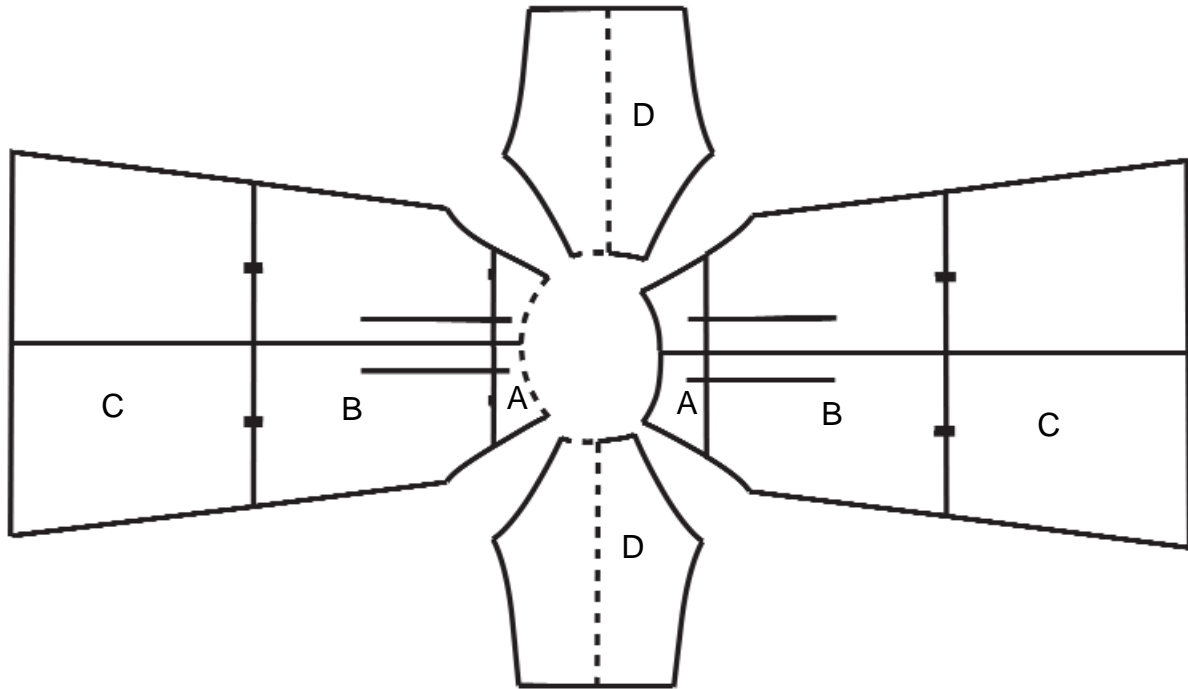


5 Place four pins at equal distance apart. With the gown inside out, divide the neck into four equal parts. Place the ribbing inside the neck and use the four pins to match the four sections of the gown neck. Place the neckline under the foot of the machine and stretch the ribbing to fit the neck of the gown as you sew, using a 1/4" seam allowance. Serge or zig-zag to finish the seam allowance.

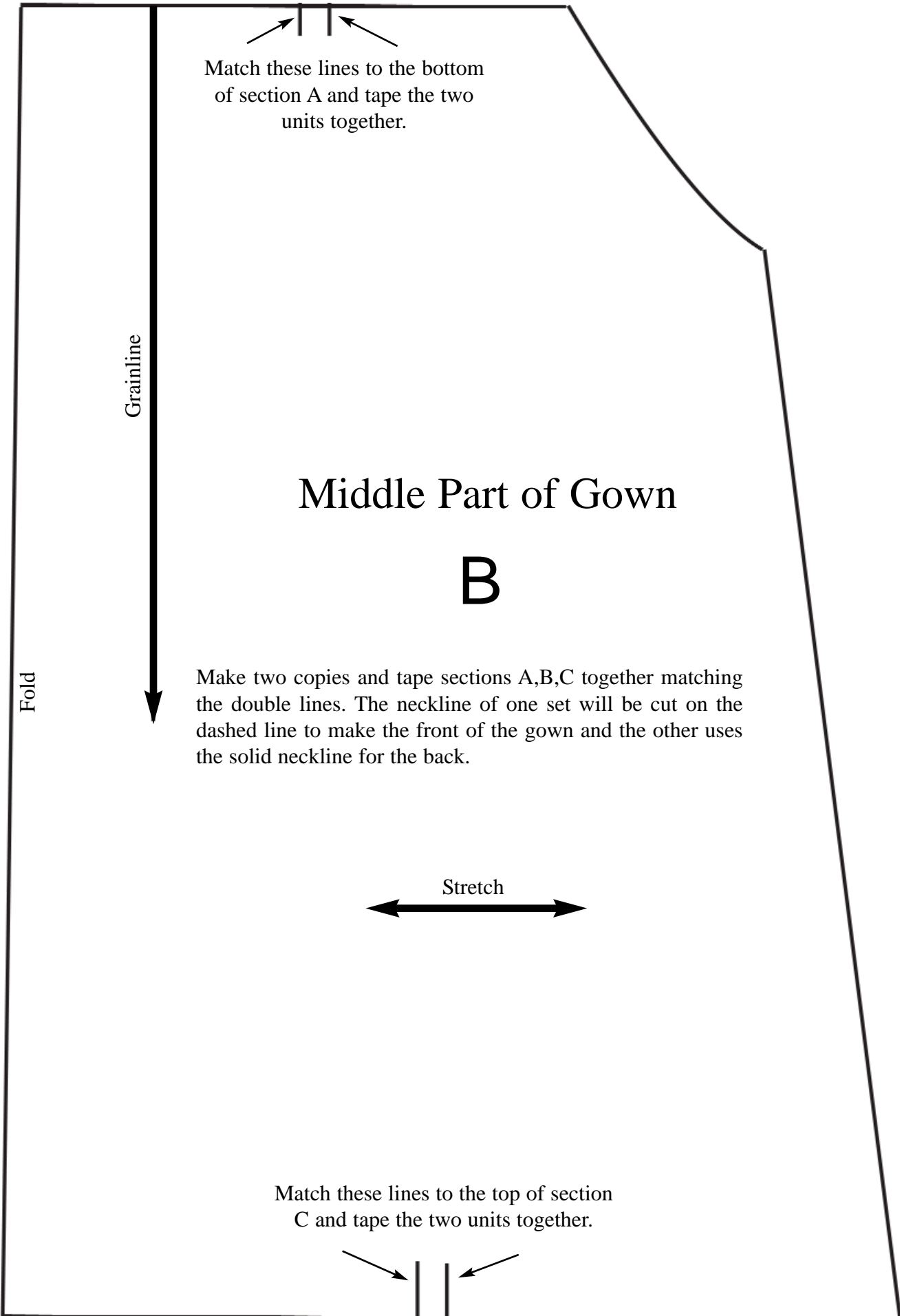


6 Sew the side seams of the gown, matching the underarm seams. Attach the cuffs just as the neck was done using ribbing cut to 2 1/2" x 5". Serge or zig-zag the seam allowances to finish the edges. Serge/zig-zag the lower edge and add a 1/2" hem. Ribbing may also be sew to the lower edge.

Assembly of infant gown pieces



Make two copies and tape sections A,B,C together matching the double lines. The neckline of one set will be cut on the dashed line to make the front of the gown and the other uses the solid neckline for the back.



Match these lines to the bottom of section A and tape the two units together.

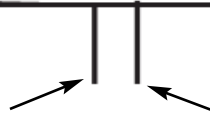
Middle Part of Gown

B

Make two copies and tape sections A,B,C together matching the double lines. The neckline of one set will be cut on the dashed line to make the front of the gown and the other uses the solid neckline for the back.

Stretch

Match these lines to the top of section C and tape the two units together.



Match these lines to the bottom of section B and tape the two units together.

Lower Part of Gown

C

Make two copies and tape sections A,B,C together matching the double lines. The neckline of one set will be cut on the dashed line to make the front of the gown and the other uses the solid neckline for the back.

Fold



